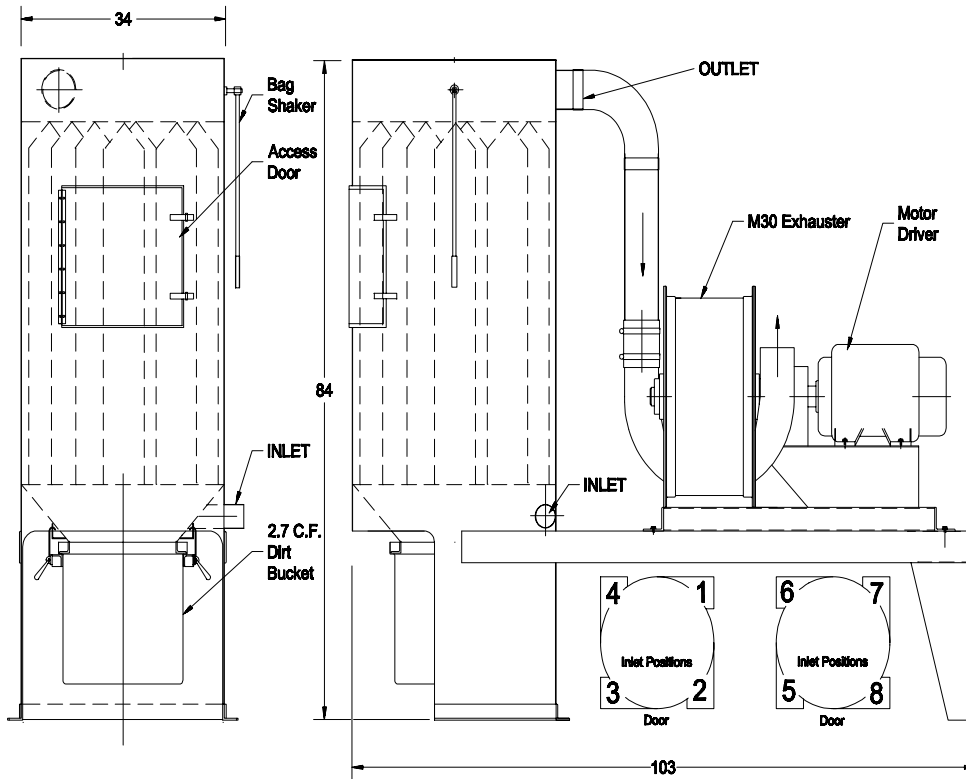




**NATIONALTURBINE CORPORATION**  
 374 Northern Lights Drive  
 Syracuse, NY 13212  
 888-293-7434 fax 315-455-5545  
 www.nationalturbine.com  
 sales@nationalturbine.com

# VACUUM EQUIPMENT TECHNICAL DATA AND DIMENSIONS

## SERIES 34 PLATFORM VACUUM UNITS



| VOLUME<br>ICFM | 4" HG<br>VACUUM | 5" HG<br>VACUUM | 6" HG<br>VACUUM | 7" HG<br>VACUUM | 8" HG<br>VACUUM |
|----------------|-----------------|-----------------|-----------------|-----------------|-----------------|
| 100            | 7.5 HP          | 7.5 HP          | 10 HP           | 15 HP           | 15 HP           |
| 200            | 7.5 HP          | 7.5 HP          | 15 HP           | 15 HP           | 15 HP           |
| 300            | 7.5 HP          | 10 HP           | 15 HP           | 15 HP           | 20 HP           |
| 400            | 10 HP           | 15 HP           | 15 HP           | 15 HP           | 20 HP           |
| 500            | 15 HP           | 15 HP           | 15 HP           | 20 HP           | 20 HP           |
| 600            | 15 HP           | 15 HP           | 20 HP           | 20 HP           | 25 HP           |
| 700            | 15 HP           | 15 HP           | 20 HP           | 25 HP           | 25 HP           |
| 800            | 15 HP           | 15 HP           | 20 HP           | 25 HP           | 30 HP           |
| 900            | 15 HP           | 20 HP           | 20 HP           | 25 HP           | 30 HP           |
| 1000           | 15 HP           | 20 HP           | 25 HP           | 25 HP           | 30 HP           |

**Notes:**  
 For Higher Vacuum  
 Units, Consult Factory

Overall Length (103")  
 May be Less (96")  
 Depending on HP  
 Requirement

See Further Specifications  
 on Page 2



**NATIONALTURBINE CORPORATION**  
374 Northern Lights Drive  
Syracuse, NY 13212  
888-293-7434 fax 315-455-5545  
www.nationalturbine.com  
sales@nationalturbine.com

## VACUUM EQUIPMENT TECHNICAL DATA AND DIMENSIONS

### SPECIFICATIONS FOR: **SERIES 34 PLATFORM VACUUM UNITS**

|                            |  |
|----------------------------|--|
| <b>FILTER AREA:</b>        | 102 SQUARE FEET  |
| <b>FILTER MATERIAL:</b>    | SINGED POLYESTER - OTHER MATERIALS AVAILABLE   |
| <b>FILTER DESIGN:</b>      | INVERTED BAG - SNAP BOTTOM   |
| <b>SHAKER MECHANISM:</b>   | MANUAL TRANSVERSE - STANDARD<br>AUTOMATIC SHAKER - OPTIONAL  |
| <b>DUST BUCKET:</b>        | 2.7 CUBIC FOOT "FEATHER-LITE" CORROSION-PROOF, MOLDED<br>HIGH DENSITY POLYURETHANE, TRANSLUCENT TO VIEW DIRT<br>LEVEL.<br>STEEL 5.0 CUBIC FOOT BUCKET - OPTIONAL |
| <b>TANK CONSTRUCTION:</b>  | 12 GAUGE ROLLED STEEL<br>STAINLESS STEEL CONSTRUCTION - OPTIONAL   |
| <b>FRAME CONSTRUCTION:</b> | 12 GAUGE, REINFORCED PLATE STEEL   |
| <b>FINISH:</b>             | EPOXY ENAMEL   |
| <b>TANK INLET:</b>         | SIZE & POSITION - PER CUSTOMER REQUIREMENTS  |
| <b>TANK OUTLET:</b>        | TOP SIDE 5-INCH TUBE - STANDARD  |
| <b>EXHAUSTER:</b>          | M30 SERIES INDUSTRIAL, 4 BEARING EXHAUSTER, CONSTANT<br>VACUUM, SELF REGULATING FLOW, HIGH PERFORMANCE CAST<br>ALUMINUM IMPELLERS                                |

**ALSO AVAILABLE AS A CARTRIDGE-PULSE JET SEPARATOR FOR USE WITH  
MORE DIFFICULT MATERIALS.**